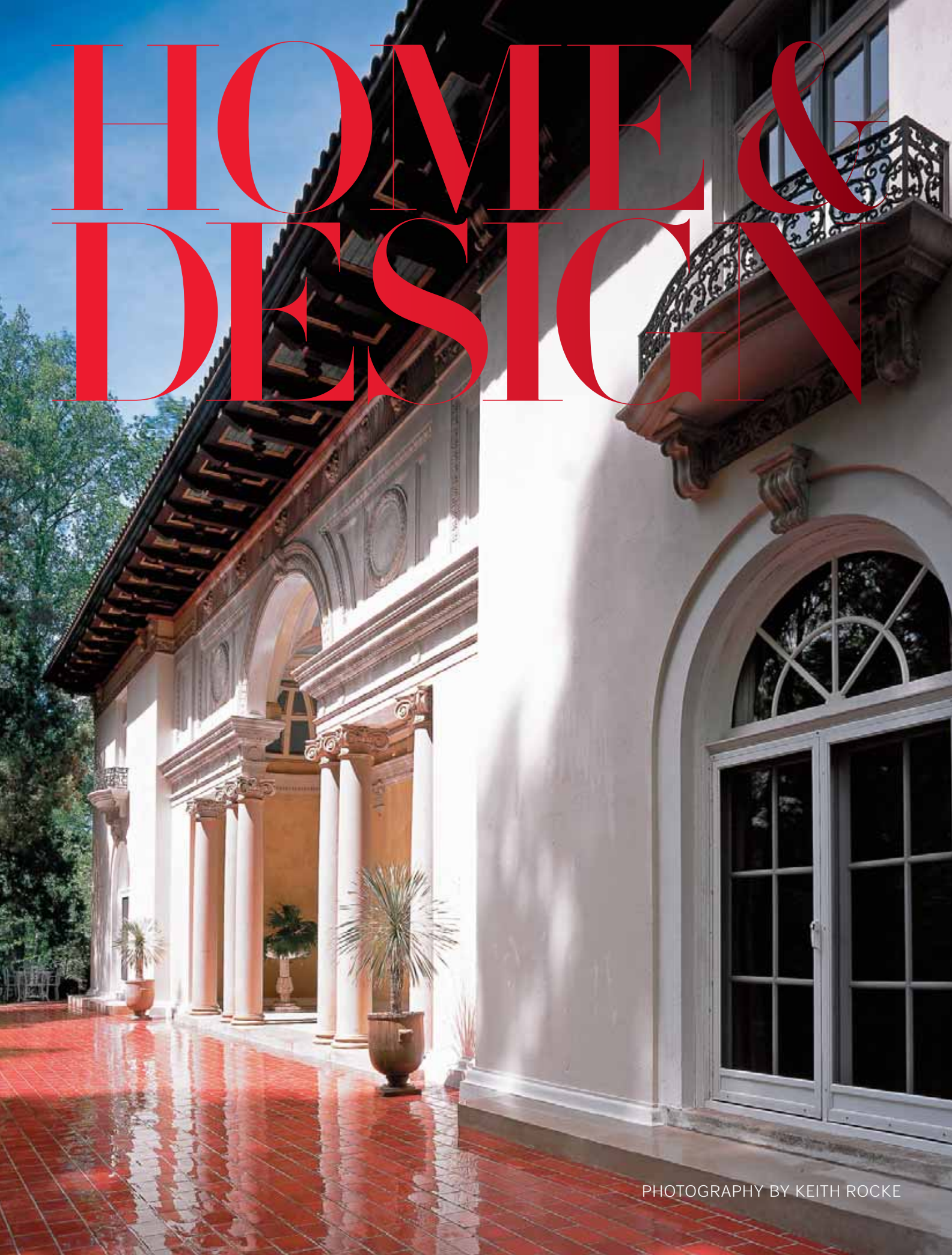


HOME & DESIGN



PHOTOGRAPHY BY KEITH ROCKE

100 YEARS ON WEST PACES FERRY

The Historic Home of
Ed and Judy Garland

BY EILEEN GORDON FREEMAN
PHOTOGRAPHY BY KEITH ROCKE



THE RICH RENAISSANCE
DETAILS OF THE LOGGIA
INVITE YOU TO THE
FRONT ENTRANCE OF
THE HOME.

The century-old home of Ed and Judy Garland is a local legend. Designed by renowned Washington architect George Oakley Totten Jr., it was one of the first two houses built on West Paces Ferry Road, set on more than 200 acres, most of which today comprise the gorgeous neighborhoods behind it. No less grand on its current five-and-a-half-acre spread, the Italian Renaissance Revival mansion has been brilliantly restored by the Garlands, who have preserved its structural integrity which dates back to 1912.

Ed and Judy Garland are the perfect custodians of this prized property, possessing both the TLC needed to effectively maintain it over the years and the artistry to enhance it. The heavenly home rivals the splendor of a museum. The beauty of the details is profound, from the magnificently cast plaster moldings and the oak, walnut and heart pine structural elements to the exquisite 100-year-old gold-plated hand-etched hardware on the doors and windows. The floors throughout are herringbone hardwoods. The massive rooms on the main level all open into each other with interior French pocket doors, creating a glamorous feel.

Owned by only two families (each spanning two generations of lawyers), the house was originally christened "Hollywood" because of the enormous amount of holly bushes on the estate. Fame followed years later, by way of scenes from a half dozen movies shot on the premises, including the Academy Award-winning film, "Driving Miss Daisy." And, ironically enough, today's lady of the house just happens to be named Judy Garland.

Judy and Ed, the son of prominent Southern lawyer the late Reuben Garland, are the second generation of Garlands to live in the home. Ed's parents had renamed the house "Newcastle," when they moved in during the second half of the 20th century. In 1988, the majestic residence was elevated to the esteemed ranks of the

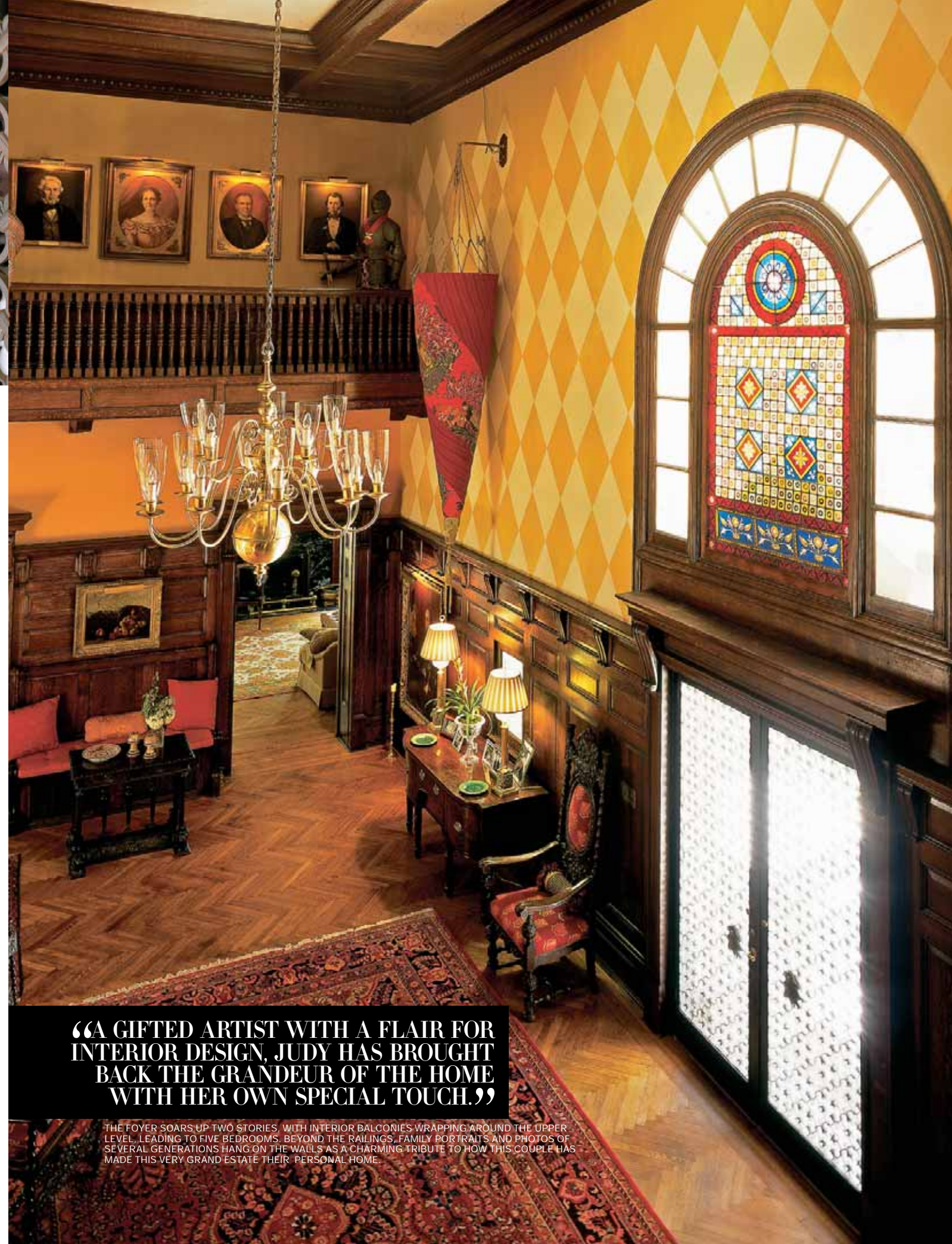


ARCHITECTURAL ELEMENTS
 THE BEAUTY IN THE DETAILS IS PROFOUND. THE FAUX FINISHED CREATIONS OF COLORIST GENE DRISKELL, THE ORIGINAL CAST PLASTER MOLDINGS AND GOLDEN HARDWARE ON DOORS AND WINDOWS HAVE MAINTAINED THE MUSEUM QUALITY OF THE GARLAND HOME.



National Register of Historic Places.

A gifted artist with a flair for interior design, Judy has brought back the grandeur of the home with her own special touch. She collaborated closely with her contractors, including Gene Driskell, who helped her develop the vibrant color palette that punctuates each room throughout the home. The Garlands are particularly pleased with Driskell's enhancement of the loggias that flank the formal front entry to the home with subtle shades of gold and teal. The rich hues of cream and gold form a large-



“A GIFTED ARTIST WITH A FLAIR FOR INTERIOR DESIGN, JUDY HAS BROUGHT BACK THE GRANDEUR OF THE HOME WITH HER OWN SPECIAL TOUCH.”

THE FOYER SOARS UP TWO STORIES, WITH INTERIOR BALCONIES WRAPPING AROUND THE UPPER LEVEL, LEADING TO FIVE BEDROOMS. BEYOND THE RAILINGS, FAMILY PORTRAITS AND PHOTOS OF SEVERAL GENERATIONS HANG ON THE WALLS AS A CHARMING TRIBUTE TO HOW THIS COUPLE HAS MADE THIS VERY GRAND ESTATE THEIR PERSONAL HOME.



THE GARLANDS DELIGHT IN SHARING STORIES ABOUT THE TREASURES IN THEIR HOME, LIKE THE 19TH CENTURY FOUR-POSTER BED IN THE FLORAL BEDROOM. ACCORDING TO THE PROVENANCE OF THE ANTIQUE FURNISHING, JEFFERSON DAVIS HIMSELF SLEPT UPON IT.



ABOVE: THE HOME'S SOLARIUM IS GRAND AND GORGEOUS WITH VIEWS OF THE LUSH TREES AND GARDENS. AT NIGHT THE RECESSED PIN LIGHTS CREATE A STUNNING ILLUMINATED REFLECTION OF THE MARBLE STATUE THAT CENTERS THE ROOM IN ALL SURROUNDING WINDOWS.

LEFT: THE RICH WALNUT WALLS AND CABINETS OF THE LIBRARY DISPLAY A WEALTH OF PERSONAL TREASURES OF THE GARLAND FAMILY.

scale diamond pattern on the front wall of the great foyer within.

The original kitchen in the Garland home is located below the dining room with a dumbwaiter that elevates meals to the butler's pantry above, adjacent to both the dining and breakfast room. Judy and Ed have found that the more than ample butler's pantry serves as a perfectly functional main floor kitchen for their day-to-day lives. But, when they entertain, which is often, the spacious main kitchen facilities below are well engaged in the event!

Ed and Judy recall adding central air conditioning to the home just ten years ago. Before that, the oversized windows, the high ceilings and the interior glass French sliding pocket doors allowed for a great flow of fresh air throughout the home. In the winter months, the home glows with the warmth of nine fireplaces.

Judy is so proud of their fabulous collection of art which in nearly every case was created for them by an artist who is among their many friends and in many instances originally from their own Buckhead neighborhood. There are several pieces in the home by the well known artist, Adriene Anderson, as well as a number of creations by ceramicist Jamie Davis. They seem to have such a close connection to the great number of personal treasures in the house and wonderful stories about how they acquired each piece. Although they admit not having known him personally, there is even an original Picasso within these regal walls.

The home's solarium is gorgeous by any standard. Here, Judy celebrated the magnificent views from the rounded walls of floor to ceiling windows with great design elements.

The walls are hand finished in intense shades of yellows and golds over the creamy marble floors. The soaring ceilings and windows seem to nestle the space in the lushness of the surrounding trees



THE GARDENS HAVE BEEN METICULOUSLY MAINTAINED WITH MANY RARE AND ENORMOUS TREES AND A EUROPEAN BOXWOOD GARDEN.



THE DINING ROOM IS DAZZLING. IT FEATURES A HAND-PAINTED MURAL OF FLOWERING TREE BRANCHES ON THE FIREPLACE WALL THAT, DURING SPRINGTIME, EXTENDS TO THE VIEW OF THE FLOWERING TREES, SHOWCASED THROUGH THE GLASS DOORS ON EITHER SIDE. THE DRAMATIC ILLUSION CREATED BY ART AND NATURE IS STUNNING.

and gardens. In recent years, the Garlands added recessed pin lights into the solarium's ceiling. They were thrilled the first evening to discover that the enhanced lighting created an illuminated reflection of the marble statue that centers the room in every one of the windows, making the room nothing less than breathtaking, both at night as well as day.

There is a portico which was originally designed for a horse and buggy to pick up the family to go out and about the town. Its columns are constructed of Southern heart pine, artfully tapered at the tops. When restoring the columns in recent years, Ed and Judy decided to leave two of them in their natural state, showcasing the beautiful wood instead of repainting them white like the others. It provides a historical view

and a conversation piece of the craftsmanship that could rarely be found in today's world. The portico is still in use but a BMW has replaced the horse and buggy!



THE BUTLER'S PANTRY SERVES AS A PERFECTLY FUNCTIONAL MAIN FLOOR KITCHEN FOR THE GARLAND'S DAY-TO-DAY LIVES AND IS CONNECTED TO AN ENORMOUS MAIN KITCHEN BELOW BY THE HOME'S ORIGINAL DUMBWAITER.